

MATE @ SEA

**Maritime Advanced Technology and
Equipment**





Fast Boats for various purposes



Film Coating Systems



Shipbuilding & Retrofit



Steel Work



Cranes – Onshore & Offshore



Beams & Spreaders



Personnel Supply

PRODUCT PORTFOLIO

Fast Boats and Daughter Crafts for various purposes



WORK BOATS

Workboats for a multitude of specialized purposes such as line handling, pilot services and transfer operations. The options are almost endless; large customized work deck areas, cranes and lifting gear, bow doors for easy boarding of equipment are just a few of them.



OFFSHORE BOATS AND DAUGHTER CRAFTS

The Offshore Boats and Daughter Crafts are tailored to satisfy the uncompromising demands of diverse maritime industries. You can rely completely on the capabilities, even under very harsh conditions.



DEFENCE & POLICE BOATS

MATE@SEA distribution feature a line of vessels designed specifically for police and military use. This includes patrol boats, interceptors, workboats and more. The vessels are designed to accommodate any request for specialized mission equipment.

PRODUCT PORTFOLIO

Film Coating Systems



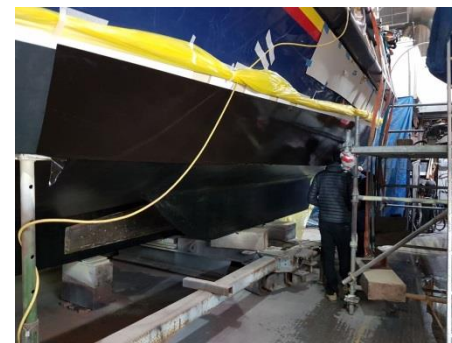
SHIP INTERIOR OUTFITTING

We supply proven interior film coatings which gives decoration to steel and aluminium surfaces in solid colours, metallic and wood designs. With a virtually infinite range of colours and a rich selection of embossing structures and gloss levels, the robust surface materials provide a whole new world of design options. These films are produced with varying performance characteristics, depending upon application – and the quality is certified to meet all common international test standards. Cruise ships, Yachts, Naval vessels, Offshore platforms and others.



ANTI-CORROSION

This film coating is a self-adhesive anti-corrosion film and offers long-term protection for all metal, aluminum and GRP surfaces in surface areas. Due to its high flexibility, small elements as well as large surfaces can be foiled and covered. This film coating neither brittles nor cracks and protects metal parts from all types of corrosion such as rust, fogging, soiling, white rust and oxidation. Since the surface of the foil is closed and neither air nor salt can oxidize the steel, the corrosion protection is maintained for up to 10 years.



ANTI-FOULING

The DNV GL and IMO certified anti-fouling film coating system maintains the current state-of-the-art fouling protection standards but is superior to existing paint-based solutions for underwater application. In line with the concept of "Fouling Release", it is based on a high-quality silicone layer and is totally free of biocides. This fouling release alternative reliably protects the hull of ships – for up to five years.

PRODUCT PORTFOLIO

Shipbuilding & Retrofit



SHIPYARD CAPABILITY

MATE@SEA is representing different shipyards in Germany and East-Europe. The shipyards are building „turn-key“ vessels of customized types as well as outfitted hulls and ship sections.

The shipyards are capable of managing major steel work projects for the offshore, energy power or petrochemical industry by using their exceptional infrastructure capabilities.



CONVERSION. REPAIR. MAINTENANCE.

MATE@SEA provides an excellent network of experienced and established engineering companies and shipyards to execute maritime services with regard to conversions, repair and maintenance works.

MATE@SEA and it´s partners together ensure the highest level of competence, reliability, flexibility and performance.

PRODUCT PORTFOLIO

Steel Work



FOUNDATIONS

MATE@SEA and its partner shipyards can supply all types of foundations in accordance with customers' requirements.

The most common types are steel monopiles, gravity-based structures (GBS), tripods, and jackets. And there are some other types, such as suction caissons, floating structures, tripiles, etc.



TRANSITION PIECES

MATE@SEA and its partner shipyards supply transition pieces that are needed to connect the towers of the offshore wind turbines with the monopiles. The primary steel part consists of a pipe construction and the secondary steel elements consists of platforms, ladders or landing systems. Transition pieces are essential construction components of offshore wind turbines and may be supplied in addition to foundations..



PLATFORMS

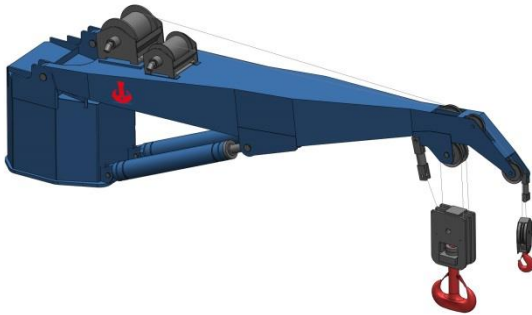
We are your partner when it comes to the engineering and construction of transformer platforms. Our partner shipyards references, e.g.:

- BARD11 OFFSHORE PLATFORM
- 400 MW SUBSTATION
- Wind Lift 1 Jack-up

In addition to the offshore wind market we support projects of the energy power or petrochemical industry with regard to their maritime activities.

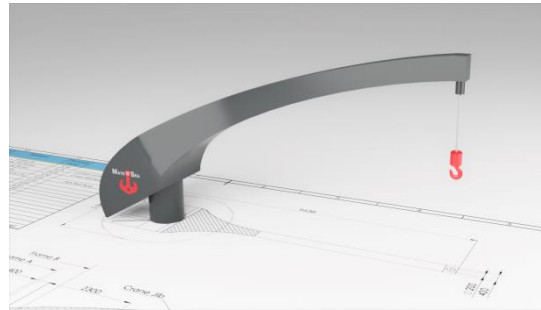
PRODUCT PORTFOLIO

Cranes – Onshore & Offshore



CRANES FOR MINING INDUSTRY

MATE@SEA are suppliers of cranes and an experienced partner for supplying and commissioning customized cranes in different sizes and lifting capabilities for the open cast mining and building materials industry. The cranes are used as service/maintenance cranes for different open cast mining systems, especially for crushing plants. The cranes are adapted to the specific climatic, geological and technical conditions.



DAVIT CRANES FOR OFFSHORE WIND TURBINES

MATE@SEA developed an innovative compact crane design using composite material for reducing maintenance costs, reducing weight, while high quality equipment and low maintenance components make it an ideal solution for lifting loads of 3 tons .
The main feature of the crane are the low maintenance and service hours and costs.
The davit crane made of composite material is safe, reliable, and operator friendly.



OFFSHORE CRANES

Typical applications:

- Deck cranes (shipboard)
- Ship to Ship cranes
- Pipe handling cranes
- Boat handling cranes

The knuckle boom cranes are available from SWL 2t – 100t lifting capacity and are supplied according to customer requirements and optional features.

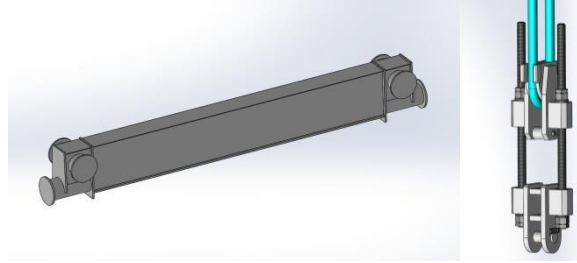
PRODUCT PORTFOLIO

Beams & Spreaders



MODULAR SPREADER

MATE@SEA is supplying modular spreaders up to SWL 500t. The modular spreader is tested according to the classification and construction rules VI-2-2 Loading Gear on Seagoing Ships and Offshore Installations and has DNV-GL marking. Lifting is possible with one spreader, it enables assembly of spreader parts, variable length, is cost-effective since it can be used in different configurations and therefore minimizes the number of lifting beams and spreaders and finally saves space on board a ship.



ADJUSTABLE SPREADER

MATE@SEA supplies adjustable spreaders of WWL 400t and acc. to customer requirements. Special features are the adjustment elements, which allow a very precise adjustment, so that the load hangs straight, even if the centre of gravity is slightly different than calculated. Currently there are developments of the adjustment elements for different SWL between 150t and 500t per element, that means for 300t - 1000t load.



LIFTING BEAMS

MATE@SEA offers customized lifting equipment:

Heavy lifting beams (HLB)
Up to 1750t SWL
Up to 24m rigging length

Heavy spreader beams (HSB)
Up to 500t SWL
Up to 12.5m rigging length
Up to 90° rigging angle

PRODUCT PORTFOLIO

Personne Supply



SHIPYARD TECHNICIANS



WIND ENERGY TECHNICIANS



MANAGEMENT PERSONNEL

For example:

- Steel worker
- Welders
- Electricians
- Mechanics
- Foremen
- Safety Coordinator
- Cable Puller

For example:

- Wind Turbine Generator Engineer
- Service Technician
- Engineer Electrical
- Rigger
- Supervisor
- Component and Composite Repair Technician

For example:

- Project Management
- Naval Architects
- Estimators
- Design Engineers
- System Engineers
- Production Manager
- HR Manager
- Planner
- Package Manager

We would be pleased to serve you with tailor-made and long lasting maritime solutions.

MATE@SEA: People you can depend on.



Maritime Advanced Technology & Equipment

MATE@SEA GmbH
Geigerstrasse 19
24105 Kiel

Marc-Laurence Mühlenbeck
Email: mm@mate-at-sea.services
Mobil: +49 170 4403588